




Supporting Green Actions in Oni Municipality through the Development of Waste Management Infrastructure







PROJECT AIM

The project aimed at improving the quality of life and health of the local population of Oni Municipality through the development of waste management infrastructure and sustainable use of resources:

-  decrease the quantity of biodegradable waste disposal in landfills
-  in general, reduce waste disposal in landfills
-  Introduce separate waste collection practices

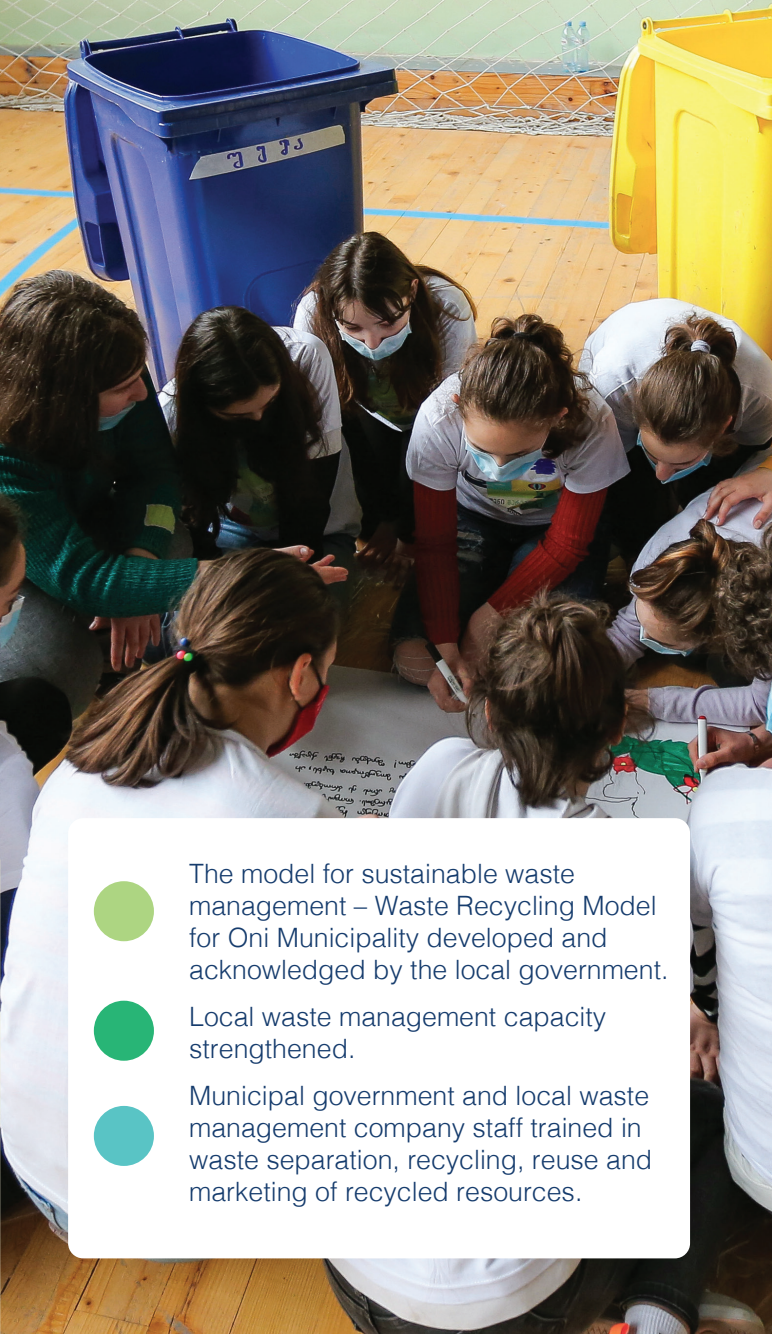
TARGET GROUPS

-  Oni Municipal Government
-  Local waste management company
-  Oni municipality population interested in composting and use of biodegradable waste



PROJECT RESULTS

Introduction of Sustainable Waste Management Model



The model for sustainable waste management – Waste Recycling Model for Oni Municipality developed and acknowledged by the local government.



Local waste management capacity strengthened.



Municipal government and local waste management company staff trained in waste separation, recycling, reuse and marketing of recycled resources.

130 PUPILS

12 YOUTH FROM OPEN CIVIL PLATFORM

10 SCHOOL TEACHERS

46 FARMERS

25 LOCAL MUNICIPAL STAFF,
RESPONSIBLE ON PLASTIC,
PAPER AND GLASS RECYCLE



Business Linkages

- Business linkages, between Oni Municipality Waste Management Company and plastic, glass and paper recycling companies, established.
- Separate waste collection introduced.

Non-formal education

- Teachers went through the Training of Trainers course on Global Environmental Challenges and Circular Economy.
- Pupils trained in waste separation and recycling and reuse practices.

16 clean up actions organized with the involvement of teachers, pupils, parents and youth.



Provision of Infrastructure

The necessary infrastructure procured and handed over to the Oni Municipality.



7m³

separate waste collection truck for waste separate collection

1

pickup truck for the household waste collection for the high mountainous villages of Oni Municipality

135

pieces of **240** liter waste bins for the separate waste collection

60

pieces of **1100** liter waste bins for organic waste collection



Biodegradable Waste Management Practices **COMPOSTING** were put in place



Capacity Building

46

farmers were trained
in composting and
biodegradable waste use.

36

farmers assisted
in setting up the
composting yards.

Public participation in waste recycling
and public awareness about related
environmental topics increased.



CARITAS CZECH REPUBLIC IN GEORGIA

📍 8 KartoZIA st. IV Building, I Entrance, IX Floor,
Apt 24, 0162 Tbilisi, Georgia

☎ (+995) 032 222 02 14

✉ ccrg@caritas.cz

🌐 georgia.charita.cz

📘 www.facebook.com/CCRGeorgia2015